

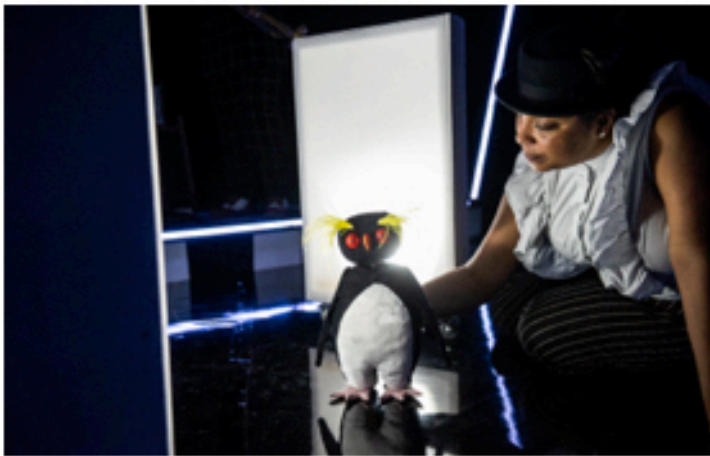
Goblin presents



The Legend of THE JAZZ PENGUIN

A magical, musical treat for ages 2+





Goblin return with a new show filled with live music and puppetry, for ages 2+. Welcome to the North Pole Jazz Lounge, a magical place with a very special guest. We hear the tale of how the Penguin found the Jazz, on an adventure around the world meeting a variety of different musical animals from dancing eggs to a drumming Octopus. Expect tooting, trumpeting and bopping in this imaginative celebration of music. The Legend of the Jazz Penguin features original music played live on stage with a variety of instruments, brilliant puppetry and lots of fun interaction that will have children jumping for joy.

Trailer: <https://vimeo.com/385480399>

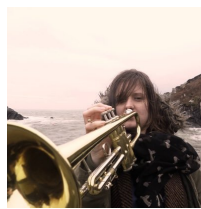
Music: <https://goblintheatre.bandcamp.com/album/the-legend-of-the-jazz-penguin>

2019 Cast



Mia Jerome

Mia is an actor, director & writer whose credits include Punchdrunk's Small Wonders Imagineate Childrens Festival.



Charlotte Keeffe

Charlotte is an award winning jazz trumpeter/flugelhorn player performing regularly across the UK and internationally as a soloist and as part of several ensembles

Devised by Matt Borgatti, Will Dollard & Mary Erskine, Design by Oliver Hymans

Praise for Goblin:

"Funny and beautiful... dazzling"

theguardian

"Incredible, innovative children's theatre"

WHAT'S ON STAGE

"Groundbreaking... dream-like... imaginative"

THE STAGE

"An Unmissable musical delight... made the children in the packed audience scream with incredulous laughter"

TimeOut

"A Brilliant show for children of all ages"

primary times

Goblin have produced shows at

SOUTHBANK CENTRE

National Theatre


Royal Albert Hall


Royal Exchange Theatre

LITTLE ANGEL THEATRE



ABOUT GOBLIN

Goblin are an acclaimed children's theatre company known for their innovative use of original music and wild creativity. We are committed to diverse casting in every show. 2019 saw **5 productions**- Hey Diddle Diddle (UK Tour), Emily Rising (Co-production with Little Angel Theatre, UK tour), The Legend of the Jazz Penguin (London Tour and Christmas run at Theatre by the Lake), Father Christmas at the Royal Albert Hall (Christmas run) & The Adventures of Pinocchio (Christmas run at Cornerstone Didcot). Previous shows include Hey Diddle Diddle, The Ballad of Rudy, Emily Rising, The Pied Piper, Goblin's Peter and the Wolf, The Nutcracker, Penguin! Elephant! & Mr Tiger Goes Wild.

TOURING INFORMATION

Now booking dates from January – April 2021

This show a flexible and adaptable studio sized show and designed to fit into a variety of spaces.

It is best suited to a traverse set up, with the audience on two sides. In the traverse set up the idea stage size would be 3m wide and 7m long, with a height of 3m. For an end-on performance, the minimum playing space we require is 4m x 4m with a height of 3m.

The get-in will take 2-3 hours and we require a very simple pre-rig. We tour all our own sound equipment and instruments, and we will require one venue technician to help us set up.

COSTS

For 1 or 2 shows on the same day:

1 day: £800 guarantee against 70/30 split in Goblin's favour

2 days: £1100 guarantee against 70/30 split in Goblin's favour

Runs over 3 days (Half-Term/Christmas) subject to negotiation.

BOOKING

Please contact matt@goblintheatre.co.uk if you'd like to book.

See www.goblintheatre.co.uk for more information, including photos & videos from all previous productions.